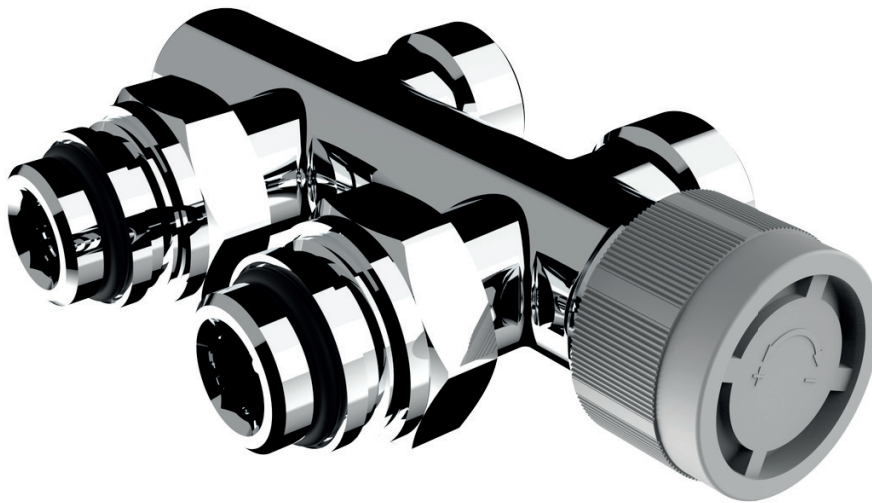


VALVE AND HOLDER

## KIT VALVE-HOLDER GROUP STRAIGHT PITCH 50 mm

PRODUCT IMAGE



### DESCRIPTION

SKVAT9 MOC D is the valve-holder group, straight with 50 mm pitch.  
Cast iron body with chrome finish that guarantees greater coating thickness resulting in greater resistance to aging and corrosion, as well as an aesthetic finish higher.  
The valve-holder group guarantees the best characteristics fluid dynamics and sealing ensured by O-rings and gaskets internal flats between the body elements and adapters.  
Attacks body heating adapter G ½".  
Attacks reductions EUROCONO ¾".

### ITEM

**SKVAT 9 MOC D**

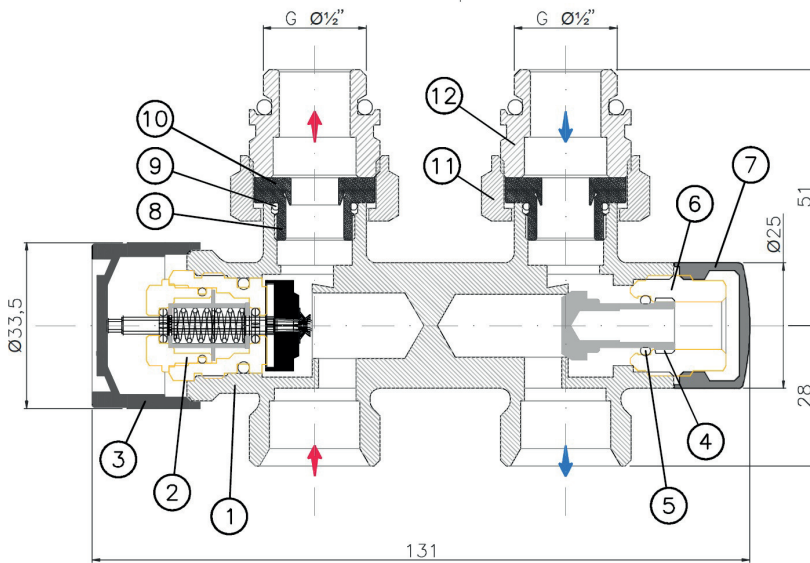
### TECHNICAL CHARACTERISTICS

Max operating pressure: 10 bar  
Max exercise temperature: 120 °C  
Max differential pressure: : 1 bar  
KVS Valor at 1 bar: 0,39 m³/h  
Hysteresis: 0,46 K ±0,2 K  
Group weight: 0,53 kg

### CONSTRUCTION CHARACTERISTICS

Valve body material:	CW 617 N UNI-EN 12165-98
Shutter material:	CW 617 N UNI-EN 12165-98
Gasket material:	Peroxide EPDM NBR (O-Ring)
Steel parts:	Stainless steel
Knob material:	Chromed ABS

## DIMENSIONAL DRAWINGS



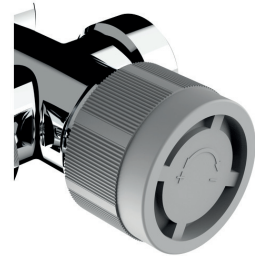
Ref.	Description	Material
1	Valve body	Brass
2	Cartridge	Brass
3	Hood	ABS
4	Shutter cartridge	Brass
5	O-Ring	EPDM (rubber)
6	Chrome hood	Brass
7	Brass cap	Brass
8	Adapter	Brass
9	O-Ring	NBR (rubber)
10	Gasket	NBR (rubber)
11	Hex nut	Brass
12	Adapter	Brass

## OPERATING INSTRUCTIONS

To adjust the flow rate, act on the valve handwheel (3).  
 Turning the handwheel anticlockwise increases the flow rate of the valve, the click of the handwheel signals the maximum opening of the valve.  
 Turning the handwheel in the opposite direction reduces the flow rate of the valve until it is completely closed.

To adjust the lockshield, use a 10 mm hex key.  
 Turning the key counterclockwise increases the capacity of the lockshield, the limit switch of the screw adjustment (safety lock) signals the maximum opening of the holder.  
 Turning the key in the opposite direction reduces the capacity of the lockshield until it is completely closed.

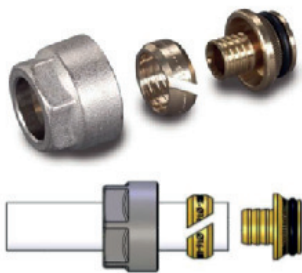
The valve can be converted; if necessary remove the manual adjustment handwheel (3).  
 Proceed to fasten the thermostatic head using the appropriate ring nut with attachment threaded M30x1.5.



## CONNECTIONS ADAPTERS MATCHING

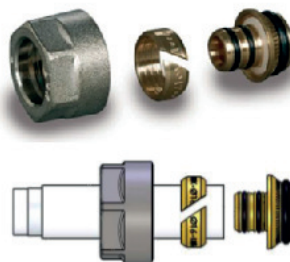
Chrome-plated adapters with EUROCONO ¼" threaded connection, for connecting the heating elements (radiators or towel warmers) to the distribution and adduction system pipes, divided by the type of pipe present in the system.

### POLYETHYLENE PIPE



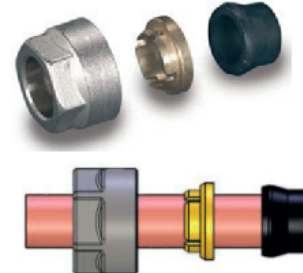
SAR 14 P	PIPE Ø14 mm
SAR 16 P	PIPE Ø16 mm
SAR 17 P	PIPE Ø17 mm
SAR 18 P	PIPE Ø18 mm
SAR 20 P	PIPE Ø20 mm

### MULTILAYER PIPE



SAR 14 M	PIPE Ø14 mm
SAR 16 M	PIPE Ø16 mm
SAR 17 M	PIPE Ø17 mm
SAR 18 M	PIPE Ø18 mm
SAR 20 M	PIPE Ø20 mm

### COPPER PIPE



SAR 10 R	PIPE Ø10 mm
SAR 12 R	PIPE Ø12 mm
SAR 14 R	PIPE Ø14 mm
SAR 15 R	PIPE Ø15 mm
SAR 16 R	PIPE Ø16 mm